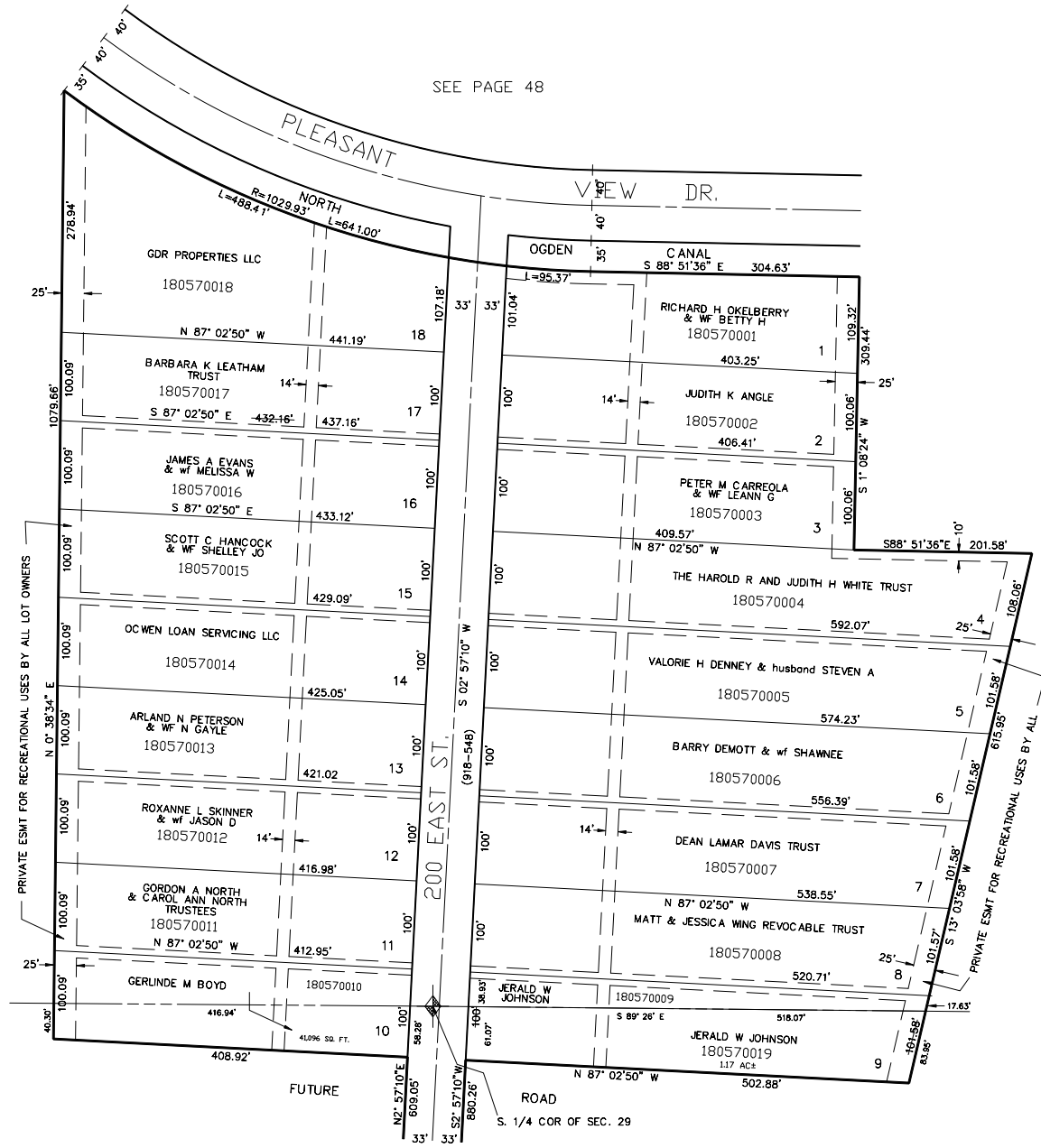


PART OF THE S. 1/2 OF SECTION 29, AND N. 1/2 OF SECTION 32, T.7N., R.1W., S.L.B. & M. &
 PART OF LOTS 14 & 40, PLAT "B" NORTH OGDEN SURVEY
 NORTH OGDEN RANCHETTES - UNIT 1

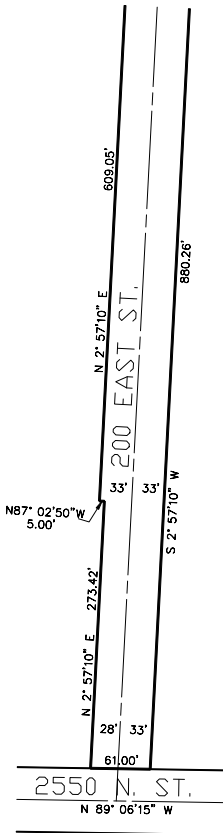
TAXING UNIT: 10

IN NORTH OGDEN CITY

SCALE 1" = 100'



SEE BELOW AT RIGHT



SEE BOOK 17, PAGE 50

25' PRIVATE EASEMENT FOR RECREATIONAL USE BY ALL LOT OWNERS

SEE ABOVE AT LEFT

7' UTILITY & DRAINAGE EASEMENTS EACH SIDE OF PROPERTY LINES AS INDICATED BY DASHED LINES EXCEPT AS OTHERWISE SHOWN.